


Papakura Post Office

a spazmodical



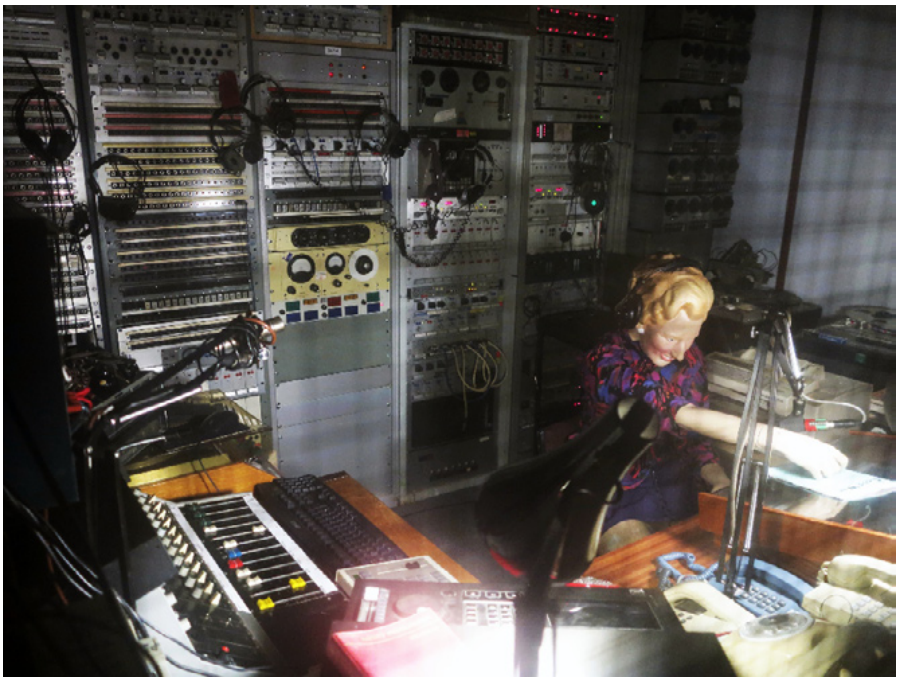
Photographs
of
London

A hand holding a smartphone against a light background, with a white sheet and a yellow vertical line visible.

Photographs of London



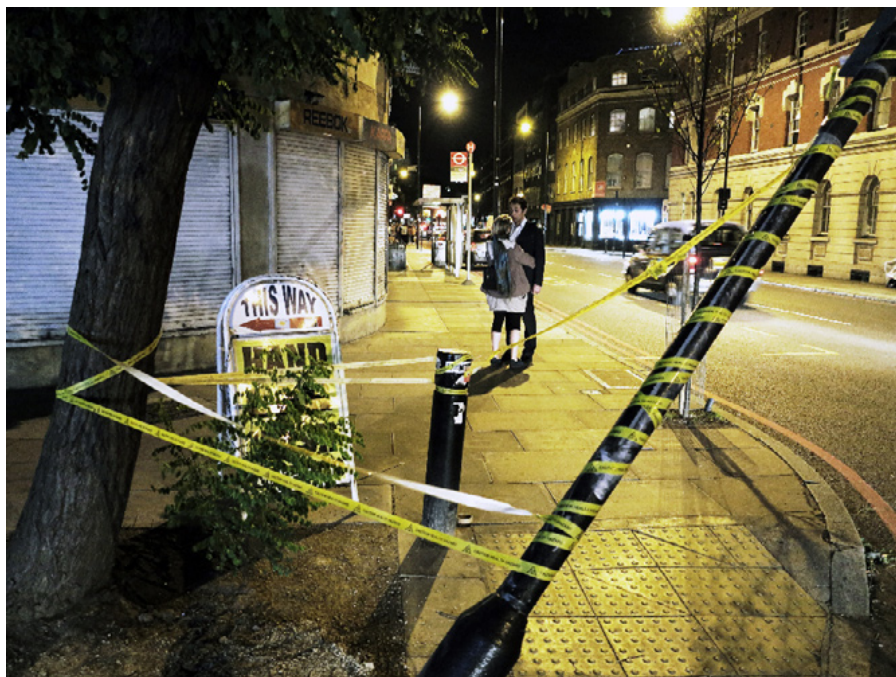
by Max Reeves



Kelvedon Hatch 2013



Aldgate East 2013



Spitalfields 2013



Spitalfields 2013



Wapping 2013



Spitalfields 2012



West End 2013



Shoreditch 2014



Blackfriars 2012



Spitalfields 2013



Whitechapel 2012



Chiswick 2014



Islington 2014



Pimlico 2014



Shoreditch 2014



Dalston 2013



Golden Lane 2013



The City 2014



Tyburn 2013



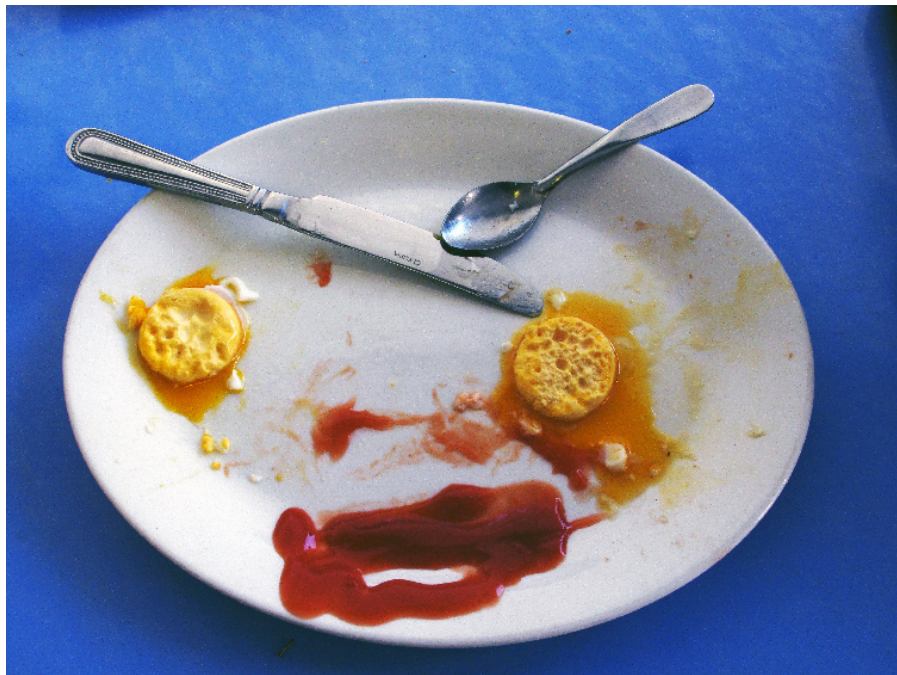
Norton Folgate 2013



Spitalfields 2014



The City 2013



Spitalfields 2013



Old Street 2012



Islington 2013



Dalston 2013



Commercial Street 2012



Islington 2014



Bunhill 2013



Shadwell 2012



East Dulwich 2013



Ludgate Hill 2014



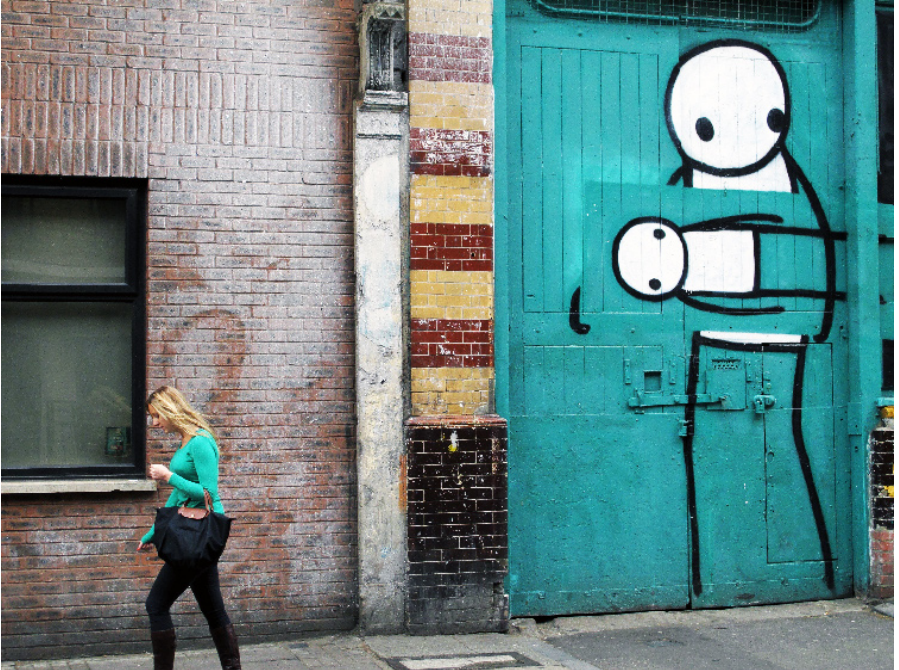
East End 2013



Algate East 2013



Tyburn 2013



Shoreditch 2012



Canning Town 2013



Shoreditch 2013



Whitechapel 2012



Ludgate Hill 2013



Angel 2013



Shoreditch 2014



Spitalfields 2013



Islington 2013



Oxford Street 2013



The City 2014



Spitalfields 2013



Hackney 2012



Ludgate Hill 2014



Trafalgar Square 2013



Southwark 2012



West End 2013



Victoria 2014



Bethnal Green 2013



East End 2012



Chancery Lane 2013



Ludgate Hill 2012



Ludgate Hill 2012



Pimlico 2013



East Dulwich 2013



Spitalfields 2013



Bank 2013



Shoreditch 2013



Ludgate Hill 2013



Oxford Street 2013



Ludgate Hill 2013



Westminster 2013



Dalston 2014



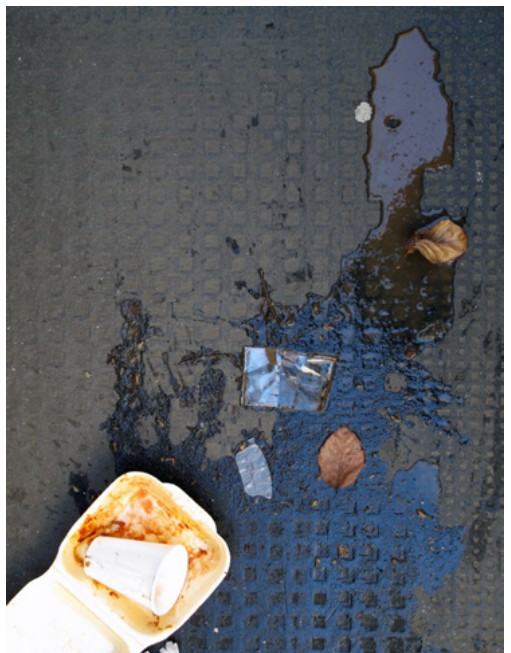
Shoreditch 2014



Smithfields 2013



Bank 2014



Spitalfields 2014



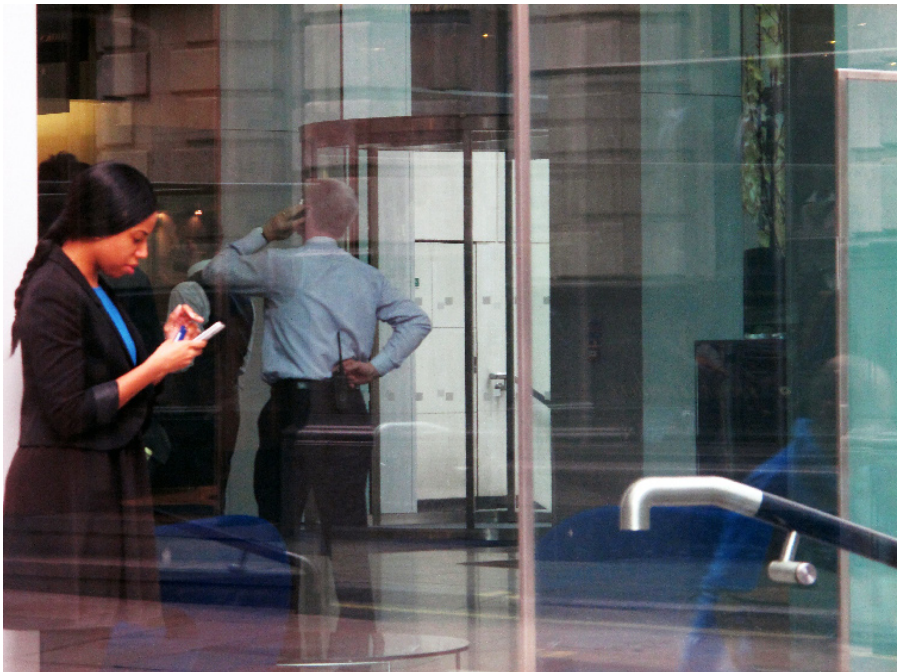
Ludgate Hill 2013



Picadilly 2011



North London 2012



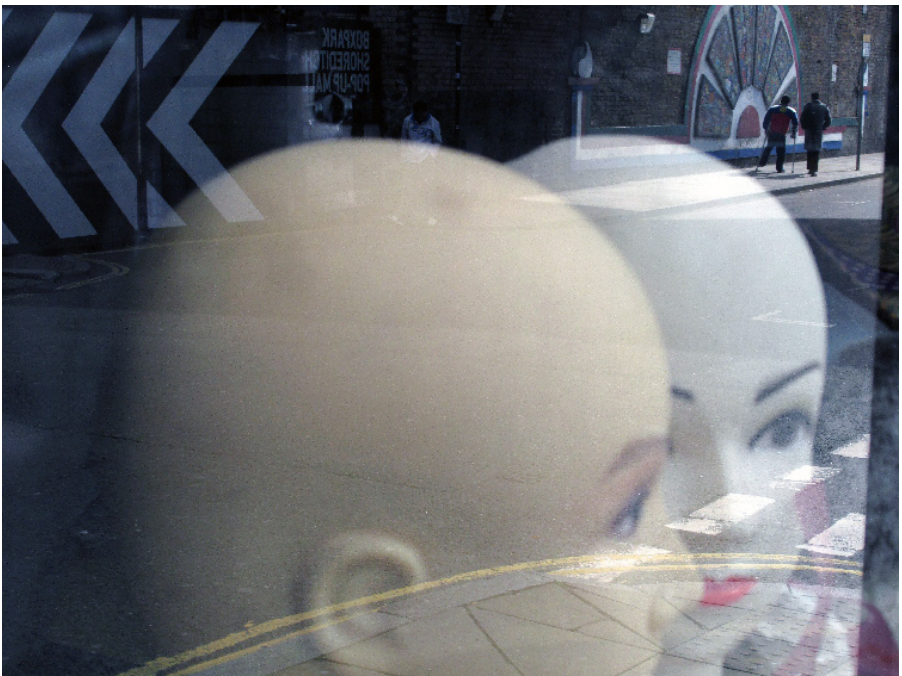
Holborn 2014



Bethnal Green 2013



Whitechapel 2014



Brick Lane 2013



Shoreditch 2013



Photographs by Max Reeves

Cover Photo: Westminster 2013

This page: Shoreditch 2014

Back cover: 'Black Flame'

(book burnt in an apparent fascist fire-bombing
of Freedom Bookshop)

Thanks to Lois Olmstead, Django and
Marlowe Chan-Reeves and Andrew

Papakura Post Office is a Spazmodical
Handmade in London

by S-Kollective

www.s-kollective.com

all photographs copyright Max Reeves

Published by Entropy Press

Spring 2014

1978-0-908820-14-6

www.s-kollective.com

Think Small!



Art and Socialism

Michael Schmidt
and Lucien van der Walt