

Papakura Post Office

a spazmodical



London is a World Class City

London is a World Class City





**Photographs
by Max Reeves**



Hyde Park



Tower of London



Borough



Hackney



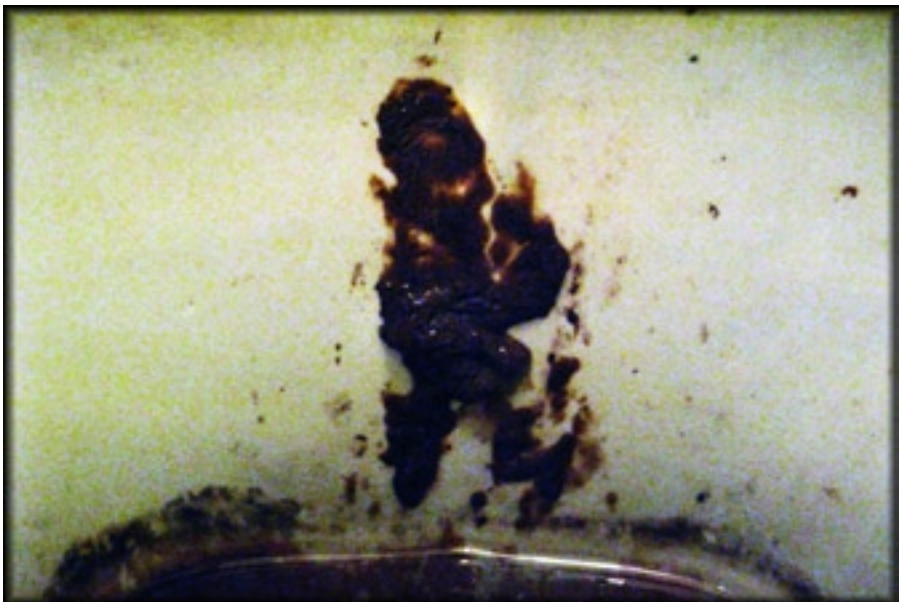
Borough



Bank



Westminster



Spittlefields



Islington



Westminster



South Bank



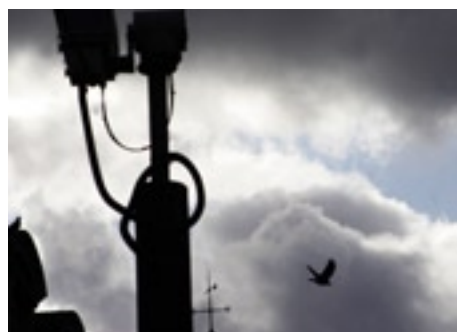
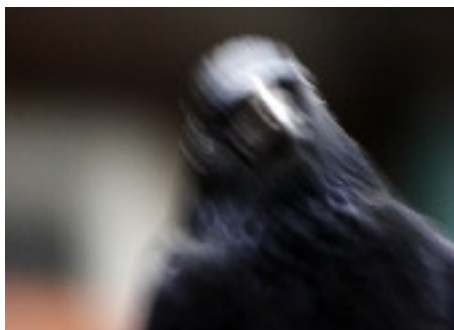
Hackney



Hoxton



Tower Hamlets





Spittlefields



The City



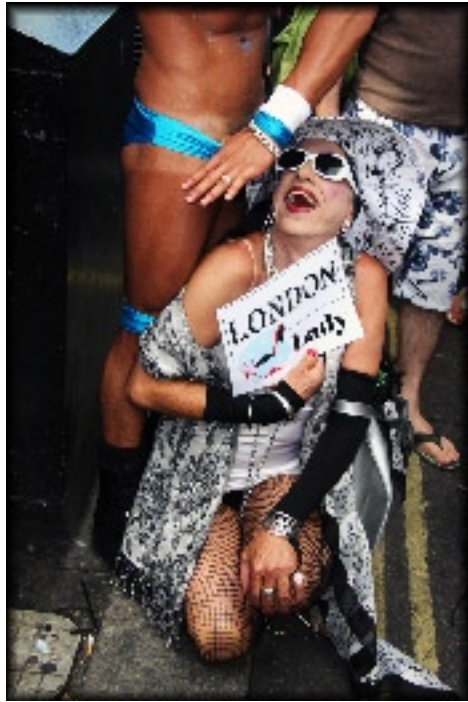
Kings Cross



Bankside



Spitalfields



Soho



Whitechapel



New Scotland Yard



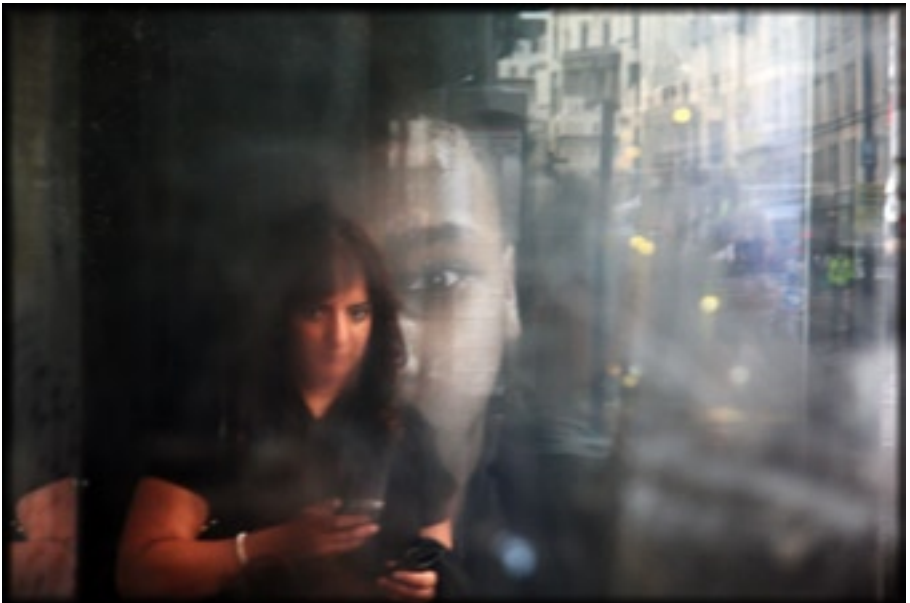
Shoreditch



Charing Cross



City of London



Bethnal Green



Coram's Fields



Bankside



Tower Bridge



South Bank



Shoreditch

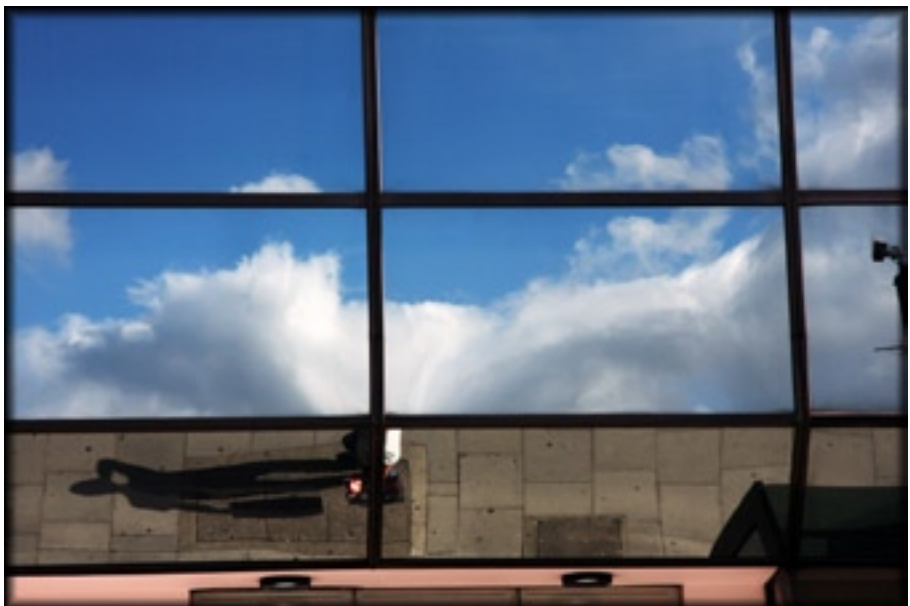


Soho

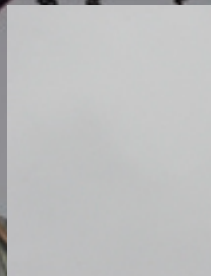
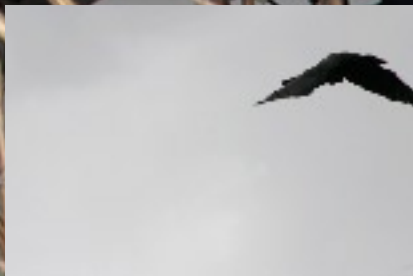
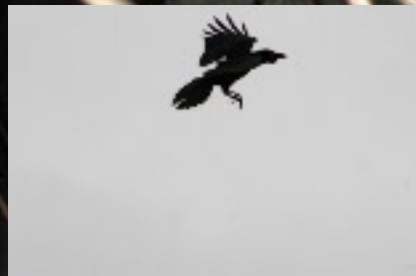




ChinaTown



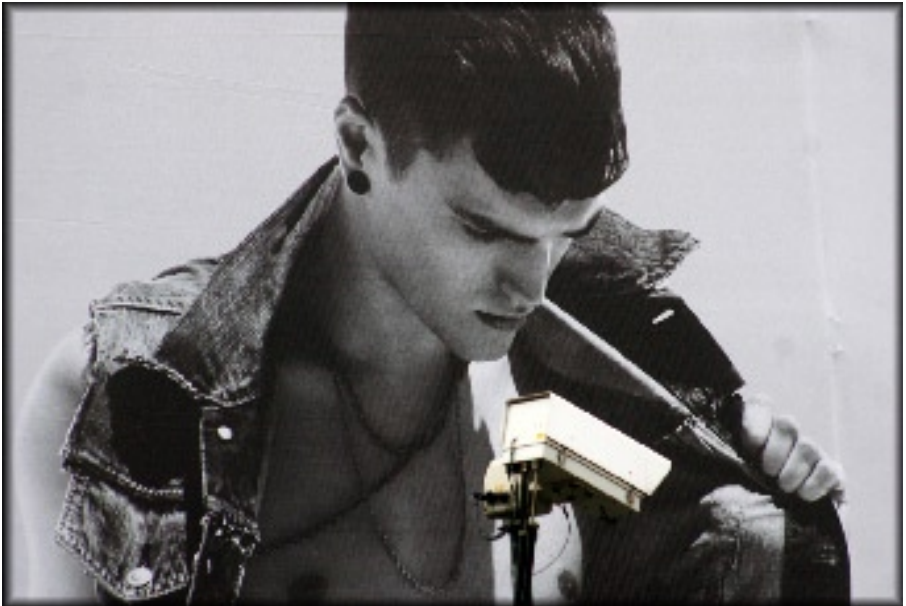
Holborn



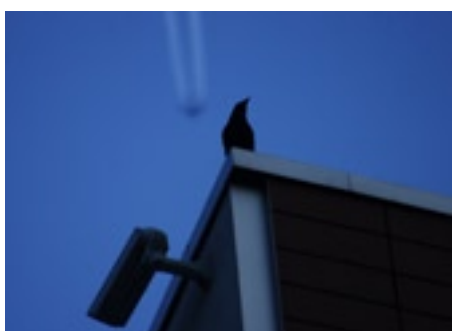
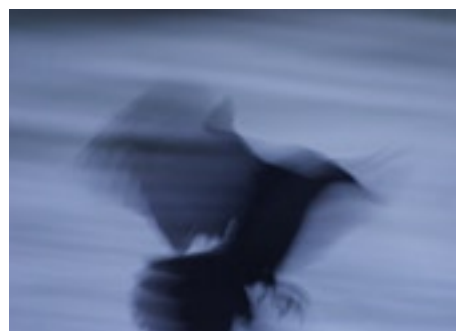
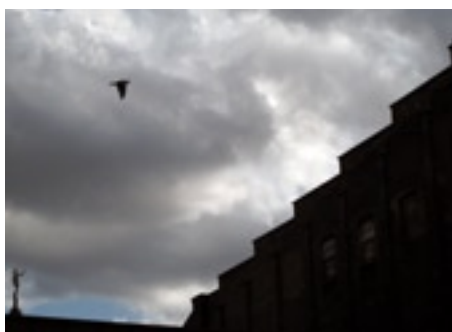
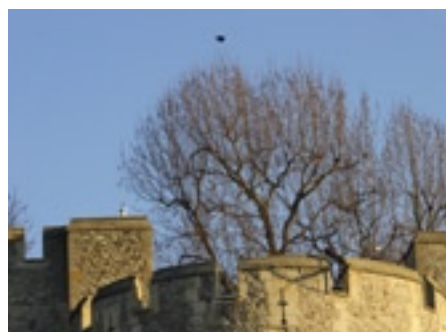
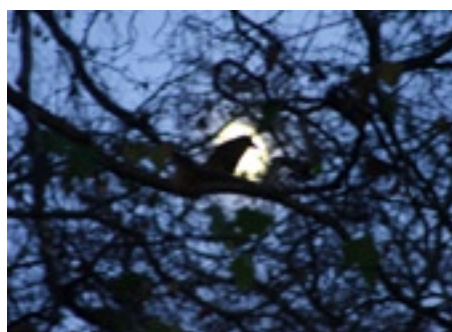
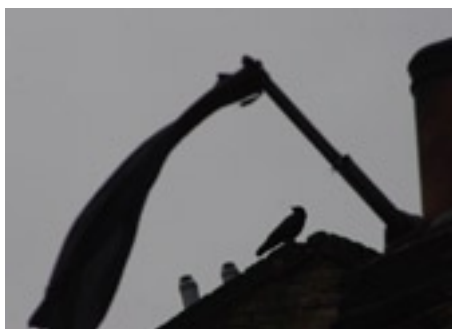




Victoria



Brick Lane





Deptford



Camberwell



West End



Shoreditch



Whitechapel



BlackHeath



London Wall



Shoreditch



Shoreditch



Hyde Park



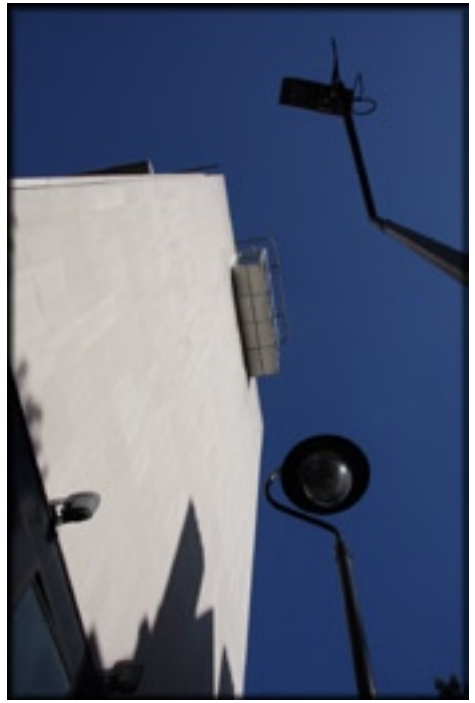
Whitechapel



Whitechapel



Smithfields



St Giles



Shoreditch



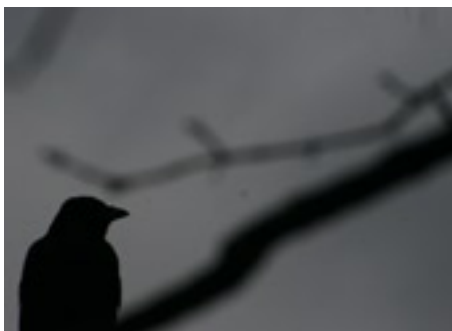
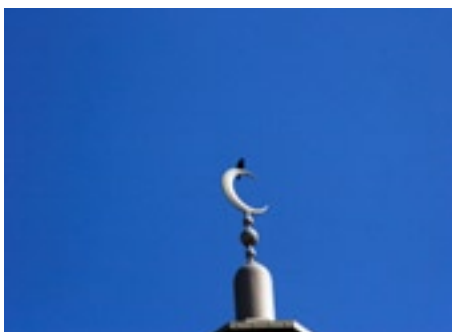
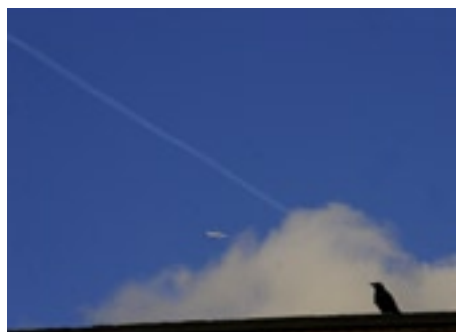
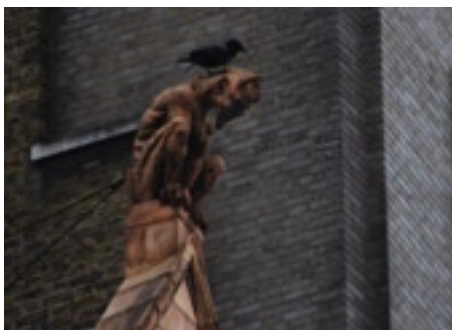
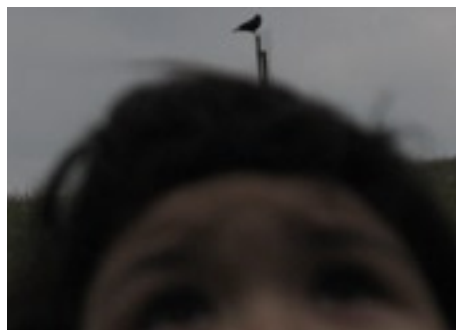
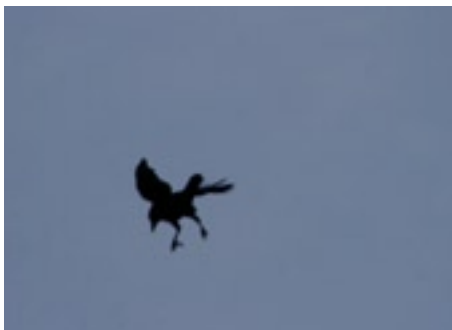
Trafalgar Square



Holborn



Bank





Borough



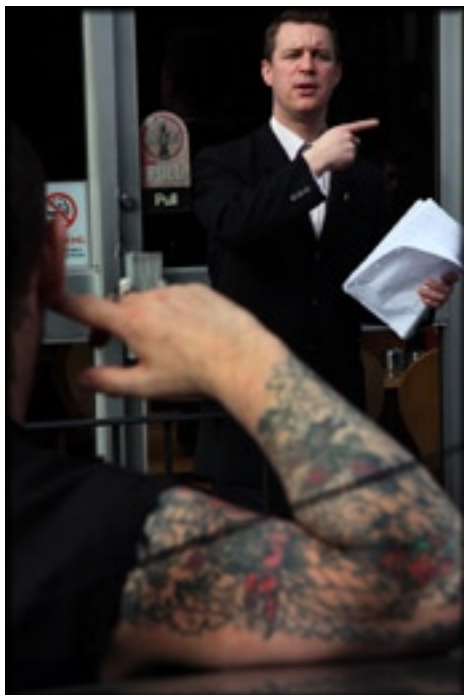
Bank



Black Heath



Temple



Hammersmith



South Bank



Bishopgate



Victoria



London Bridge



Shoreditch



City of London



Shoreditch



Haggerston



Paternoster

LONDINIUM



London is a World Class City – Photographs by Max Reeves

Max Reeves' photographs use London as a setting to investigate the intersections and interstitials between life and myth, revealing the complexity of London's psychological terrain. The actuality of the city morphs into a documentation of personal mythology populated with curious characters, palimpsests, crows, protestors, children and aporisms. Blood, authority versus the freedom of the individual and transcendence emerge as themes through layered and often ambiguous images. 'London is a World Class City' embraces a poetic vision of London superseding its geographic locality. Lois Olmstead

The photographs of Max Reeves catch London off guard as it unwittingly reveals its underlying tensions. Uncanny alignments, temporary geometries, and conjunctions of the grotesque and the transcendent frame a sort of automatic, photographic writing. London, that 'World Class City', is a den of hypocrites, a place of 'convulsive beauty', a space of mental anguish, blocked lines of flight, faltering codes. Our eyeline to the sky is repeatedly barred by the advertising images, spires and spikes of security fences – but, conversely, through the lattice of CCTV cameras and concrete, Buddleia bursts forth affirming life. Josie Berry Slater

Crows are at once an often unbearable portent of madness, a malign underclass, producing a crying babbling sound haunting man's management of nature – even in an urban landscape crows remain inhabitants of a wilderness annexed to the city and troubling of enlightenment values of reason and order. As Antonin Artaud emphasises, the crows point to a kind of beyond, the unarticulated and always outside. In Max Reeves' photographs this sense of foreboding carries over. Here, crows, these usually marginal witnesses to the metropolis, draw the eye away from built space – becoming a kind of punctum through which the city is pictured and reoriented. Anthony Isles

The symbol of transcendence is no longer the phoenix or the unicorn... Whether we live among the cornfields or skyscrapers, a far more resonant symbol is the crow. Boria Sax. Crow.

Cover Photo: The Hand of Glory
Photography/making: Max Reeves
Production: Lois Olmstead
Art/PsychoGeosophy: Marlowe Chan-Reeves

Thanks to Anthony Isles, Josie Berry Slater, Django Chan-Reeves, and Andrew
No thanks to the Capitalist System and
Vinca Gilbert Daescent

Papakura Post Office is a Spazmodical
Handmade in London by S-Kollective
www.s-kollective.com

Published by Entropy Press
Spring 2010
ISBN 978-0-908820-02-3

Think Small!



